

Spring Lake, A Condominium

All of Lot 2 of CSM 4651, being part of the Northeast 1/4 of Section 15, Township 21 North, Range 16 East, Town of Greenville, Outagamie County, Wisconsin



File: 2612condo.dwg
Date: 07/31/2006
Drawn By: aic
Sheet: 1 of 6



LEGEND

- △ 1/2" Rebar Found
- 3/4" Rebar Found
- 1" Iron Pipe Found
- ⊕ Government Corner

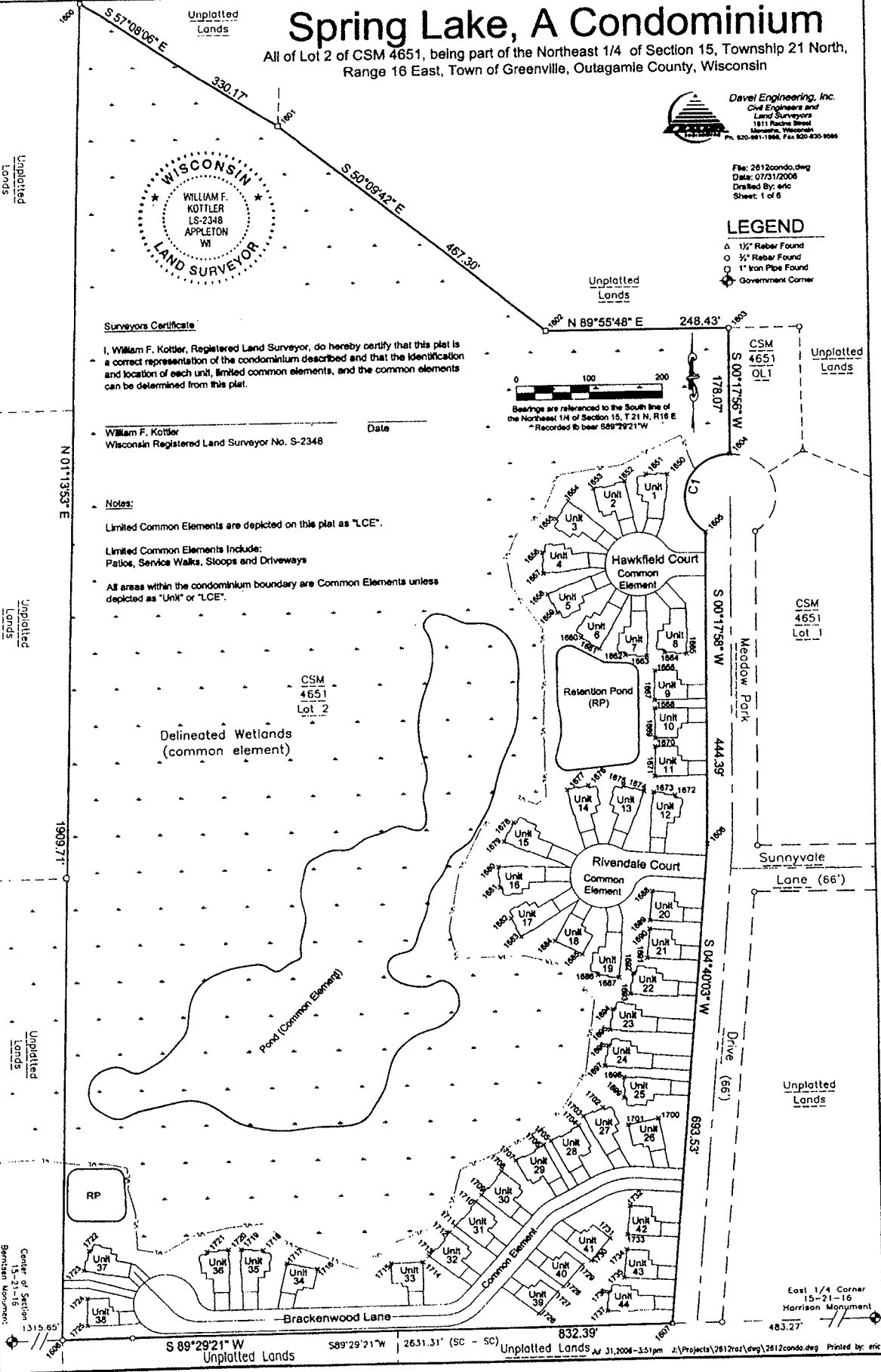
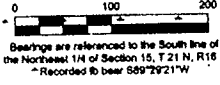
Surveyors Certificate

I, William F. Kottler, Registered Land Surveyor, do hereby certify that this plat is a correct representation of the condominium described and that the identification and location of each unit, limited common elements, and the common elements can be determined from this plat.

William F. Kottler
Wisconsin Registered Land Surveyor No. S-2348

Notes:

- Limited Common Elements are depicted on this plat as "LCE".
- Limited Common Elements Include:
Patios, Service Walks, Stoops and Driveways
- All areas within the condominium boundary are Common Elements unless depicted as "Unit" or "LCE".



Reduced
(A)

Center of Section
15-21-16
Bentley Monument
1315.85'

East 1/4 Corner
15-21-16
Harrison Monument
483.27'